



TECHNICAL SERVICE BULLETIN

TSB C-NP-FN-0059

Date: October 4, 20224
To: All Service and Parts Managers
From: Technical Services Department
Subject: **New Flue Elbow for 90+% Upflow Furnaces for Improved Condensation Management**

We are pleased to announce a new Flue Elbow (**Part# 0164F00029**) for all 90+% upflow furnaces, as shown in Figure 1 below, that replaces the current Flue Elbow (**Part# 0164F00025**). All 90+% upflow furnaces with a serial number of 2410 or later include the new Flue Elbow. The redesigned Flue Elbow helps manage increased condensation levels with a higher dam near the inducer connection to help block condensate from entering the inducer assembly, compared to the current Flue Elbow.

The diameter of the horizontal left drain port in the bend of the elbow has been increased to the same size as the main drain port making it easier in the field to change to the alternate drain port, compared to the current Flue Elbow. This alternate drain port is closed with a plug from the factory. The new Flue Elbow has an 87° bend at the inducer connection to tilt the elbow down 3° toward the drain port. A stamped extrusion has been added to identify the hose clamp screw location.

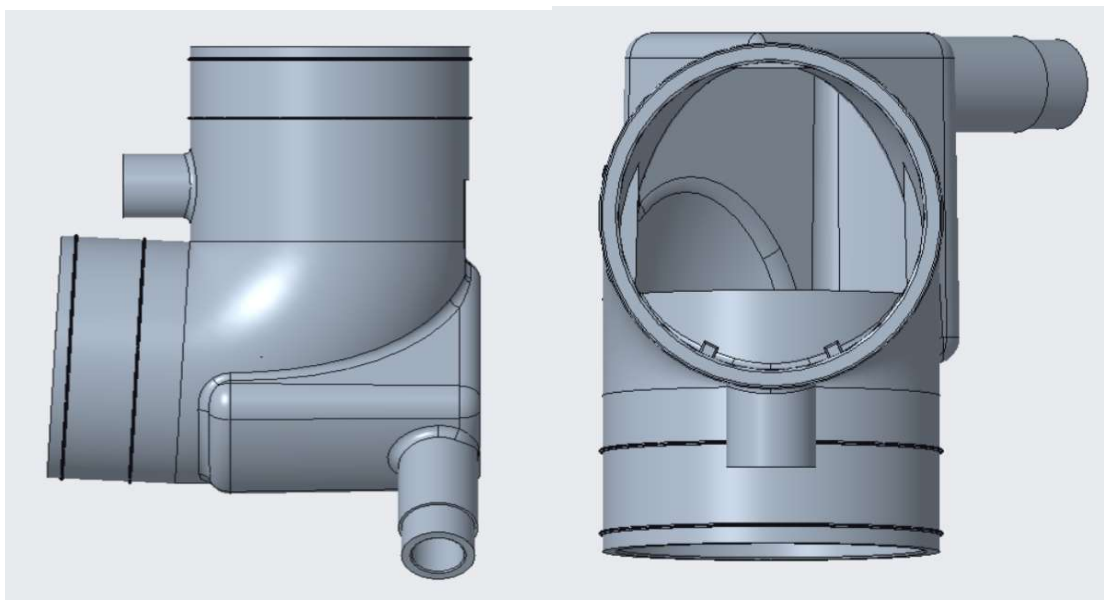


Figure 1: New Flue Elbow (Part # 0164F00029) for All 90+% Upflow Furnaces

(Continued on next page)

DAIKIN COMFORT TECHNOLOGIES NORTH AMERICA, INC.

19001 Kermier Road • Waller, TX 77484 • (713) 861-2500 • www.northamerica-daikin.com

Daikin products are subject to continuous improvements. Daikin reserves the right to modify information in the bulletin without notice and without incurring any obligations.

Amana® is a registered trademark of Maytag Corporation or its related companies and is used under license. All rights reserved.



TECHNICAL SERVICE BULLETIN

A new Horizontal Drain Kit (**Part# 0270F20723**) for 90+% upflow furnaces provides the new drain hose for the alternate drain port used for horizontal left installations of the 90+% upflow furnaces. This kit will include a drain tube (**Part# 0164F00009**) to be used with the current Flue Elbow (**Part# 0164F00025**) as well as a 2nd drain tube (**Part# 0164F20000**) for use with the new Flue Elbow (**Part# 0164F00029**).

The current Horizontal Drain Kit (**Part# 0270F05404**) inventory will be reworked with the additional tube mentioned above such that all future shipments will include the new Horizontal Drain Kit (**Part# 0270F20723**).

The Horizontal Drain Kit will be provided for distribution at no charge and should be made available to the contractor at no charge as well.

If you have technical questions, please call 1-855-DAIKIN1, option 3, or e-mail TechnicalServicesDaikin@daikincomfort.com.

DAIKIN COMFORT TECHNOLOGIES NORTH AMERICA, INC.

19001 Kermier Road • Waller, TX 77484 • (713) 861-2500 • www.northamerica-daikin.com

Daikin products are subject to continuous improvements. Daikin reserves the right to modify information in the bulletin without notice and without incurring any obligations.

Amana® is a registered trademark of Maytag Corporation or its related companies and is used under license. All rights reserved.